

# Fixing Guide

## Solar Limpet - Tile Roof (LIMPET-TR)



Solar Limpets are warranted for 20 years, providing the installation is carried out by a Solar Limpet certificated installer, the installation instructions have been complied with in full and the roof was surveyed as suitable for PV installation.

### Important Information

- For use on 10" x 6" Rosemary Cement and Clay Tiles
- Allow a maximum of 1.2m between Limpets, using only fixings supplied by Solar Limpets
- Wind uplift resistance as tested: 1610.4 N per bracket
- Compatible with 20 – 60° pitched roof designs
- The Solar Limpets Tiled Roof System is compatible with timber rafters suitable to ensure a minimum of 30mm screw embedment
- Suitable for above roof installations
- The Limpet roof hook is compatible with the currently available side-mounted rail systems and the associated rail manufacturers' standard rail-to-roof hook connecting bolt.

### Fixing Components | SL-TRS-25KIT

The system comes in boxes of 25 Solar Limpets and fixings. **Please Note:** The kit does not include rail connecting bolts, which are sourced from your rail supplier and tile blanks, which will also be required.



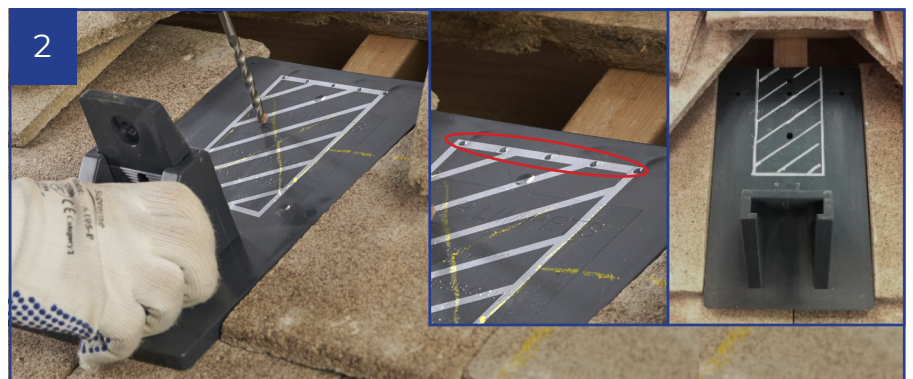
- 1 25x Limpet Base Plate *SL-BP00001* 2 25x Limpet Adjustable Bracket *SL-AB00001* 3 25x Adjustable Bracket to Base Plate Bolt *SL-ABBP01*  
4 25x Adjustable Bracket to Base Plate Washer *ABBPW01* 5 25x Adjustable Bracket to Base Plate Nut *SL-ABBP01*  
6 50x Base Plate Fixing Screws *SL-BPFS115* 7 50x Base Plate Fixing Screw Washers *SL-BPFSW01* 8 50x Limpet Tile Blank *SL-LTB0001*

### Fixing Method 1

Tile removed and rafter centre falls within the fixing area (cross hatched) in step 2.



Remove tiles to reveal rafter.



Align the top of the Limpet with the batten. Mark and then drill 2 x 7mm fixing holes between the top row of dimples as shown, as far apart as possible, avoiding the tiles below the bottom hole.





3

Fit and tighten both screws. First, insert the bottom screw halfway. Second, insert & tighten the top screw fixing until the washer starts to crush. Finally, to avoid excess pressure being applied to the tiles below the Limpet baseplate, finish tightening the lower screw **ONLY** until the washer stops turning. **DO NOT OVERTIGHTEN.**



4

Replace the tiles to complete Limpet installation.

## Fixing Method 2

Tiles removed and rafter centre does not fall within the permitted fixing area.



1

Tiles removed and rafter centre does not fall within the permitted fixing area.



2

Remove adjacent tiles exposing the rafter.



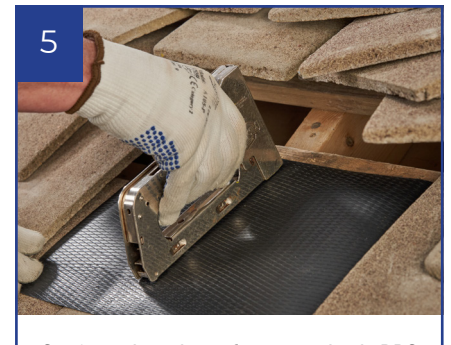
3

Select a Limpet tile blank.



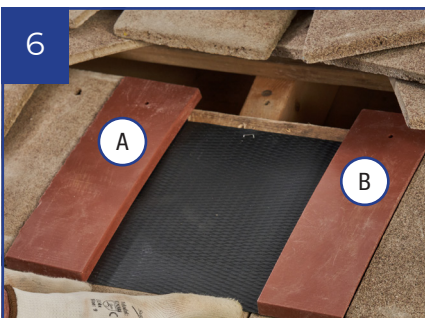
4

Cut blank in half lengthwise. A & B.



5

Cut & staple a piece of 225mm plastic DPC to the batten.



6

Hang the two halves.  
Cut edges outwards. A & B.



7

Align the top of the Limpet with the batten. Mark and then drill 2 x 7mm fixing holes between the top row of dimples as shown, as far apart as possible, avoiding the tiles below the bottom hole.





8

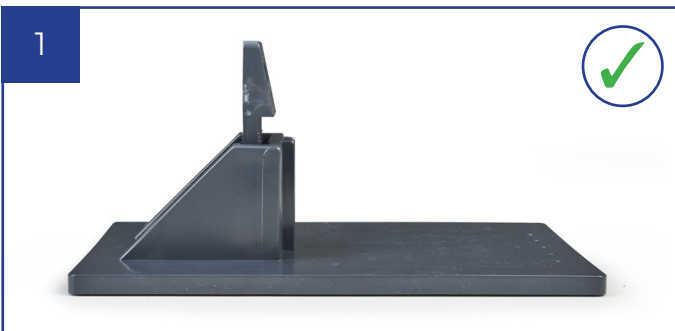
Fit and tighten both screws. First, insert the bottom screw halfway. Second, insert & tighten the top screw fixing until the washer starts to crush. Finally, finish tightening the lower screw **ONLY** until the washer stops turning. **DO NOT OVERTIGHTEN.**



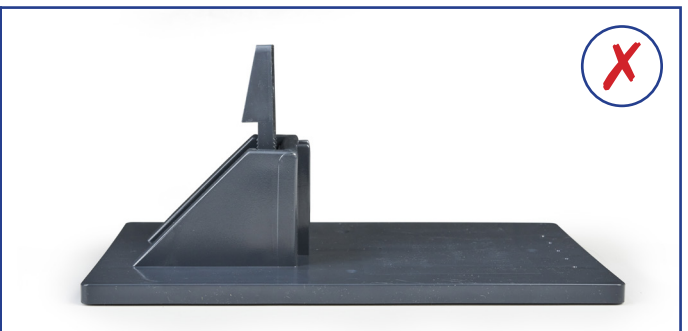
9

Replace the tiles to complete limpet installation.

## Adjustable Bracket Installation

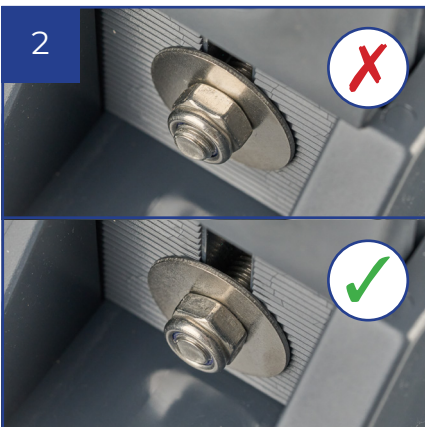


1



### FOR TILE APPLICATION.

Insert the adjustable bracket, angled head facing forwards.



2



Fit the adjustable bracket bolt, washer & nyloc nut as shown.

**Tighten ONLY until the nut sits flush with the end of the bolt.**



3

Solar Limpets are suitable for side-fix type rails only. The rail connecting bolts should be sourced from your rail supplier to match your chosen rail. When fixing the rail to the adjustable bracket, tighten until the nut bites & then another half to one-third turn is sufficient. **DO NOT OVERTIGHTEN.**

## Fragile Tile Breakages

Using Limpet Tile Blanks to replace tiles below the Limpet baseplate will further reduce tile damage on fragile tile roofs. Using 1.2m lengths of 4 x 2inch timber rested on the installed Limpets in addition to the rails will also help spread any compression loading during the installation.



## 4 & 6mm Cable Entry Flashing

Solar Limpet Tile Blanks can be adapted for use as a simple weatherproof cable flashing.

1



Using a 7mm drill, drill holes in the lower three ribs of the tile blank.

2



With a tile removed at the desired cable entry position, feed the DC cables out of the roof. Thread the cables through the holes.

3



Fit the tile blank in place of the original removed tile.

## Maintenance

Installed correctly the Solar Limpets - Tiled Roof System system does not require ongoing maintenance.



[www.solarlimpets.co.uk](http://www.solarlimpets.co.uk)

Helpline: 07968 231145

[sales@solarlimpets.co.uk](mailto:sales@solarlimpets.co.uk) 01993 869278